

FabPro LLC

Precision Metal Fabrication From Design to Production

FabPro LLC specializes in precision sheet metal fabrication, manufacturing, and design engineering. We can take your ideas from design to production. We are ready to assist you with all facets of the manufacturing process.



Located in Whitewater, Wisconsin, halfway between Madison and Milwaukee, the FabPro LLC team is ready to meet your manufacturing needs. With more than 50,000 sq. ft., and room to grow, our facility can handle production and prototype runs for all industries.

Customer Responsive - from Service Parts to Production Runs

Rapid Quotes

We accept 2D and 3D CAD files, blueprints, drawings, and other file types.

CAD

We utilize the latest CAD software. There is no need to worry that the original design's accuracy or integrity will be compromised.

FabPro LLC offers:

- Rapid Prototypes
- Assemblies & Sub-assembly
- Rapid Turnaround
- CNC Turret Punch Presses
- CNC Press Brakes
- High Speed Laser Cutting
- Welding
- Automated Saw Cutting
- Hardware Installation

From our high speed laser to our robotic press brakes and our CNC turret punch presses, we have the equipment needed to manufacture your design.

■ Our Manufactured Products

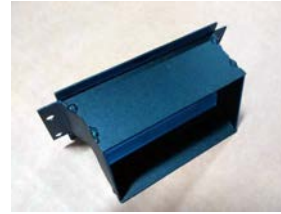
Electronic Enclosures and Dashboard Panels

We fabricate components using uncoated raw stock; steel, aluminum or stainless. You may choose to use precoated material; galvanized, aluminized or PaintLoc.



Finished Equipment and Machine Enclosures

A variety of colors are offered in wet paint or the more popular powder coat finishes.



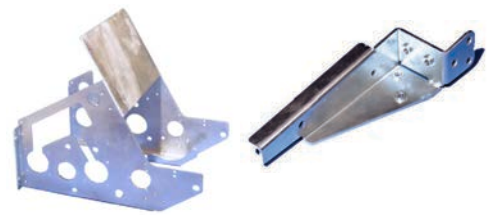
Simple Laser / Form Bracketry

Parts are offered with or without a variety of platings from basic zinc to Military Spec.



Finished Brackets with PEM Hardware, Tapped holes, Welded Studs

Secondary machining is offered on complex assemblies.



Industrial Blower Units and Proprietary Product Manufacturing

- Manufactured, assembled, and fully tested
- Sheet metal, wiring, and controls assembly and test
- Crated and drop shipped to our customer's end user



Chassis Fabrication and Assembly



Electronic Chassis Subassemblies



Parts requiring extensive setup time can be run in blanket releases and inventoried at our facility . . . shipped to your production needs.

■ Our Manufacturing Equipment

Our manufacturing equipment is primarily located at our Whitewater plant. Secondary operations; machining, painting, plating is performed at one of our HyPro parent facilities or an approved source.

Amada Laser 4kW FO3015



Amada Turret Coma 50-50-70



Amada Turret Pega 30-30-40



Togu Tool Grinder, Togu III



Amada Brake Press 35



Amada Brake Press FaB80



Amada Spot and Stud Welder ID40ST



PS4 Pemserter



Amada Horizontal Band Saw HA250W



Wulftec, WP-200 Auto Shrink Wrapper

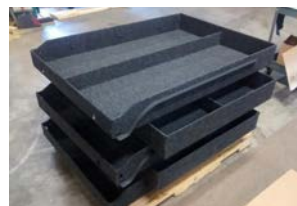


Product Packaged and Shipped to Customer's Specifications



Cap-Pack® Tool Drawer Product Line / Aluminum Drawer Fabrication/Assembly

- Product is fully fabricated and assembled
- Fabric laminating line
- Crated and drop shipped to our customer or distributors



Equipment Details

| Manufacturer / Model | Capabilities |
|-----------------------------------|---|
| Amada Laser 4kW FO3015 | <ul style="list-style-type: none"> - 4000 W laser capacity - 134" x 61" x 7" x/y/z/ travel - 120" x 60" max. sheet size - Max. sheet thickness: mild steel ½", Stainless ¾" - Aluminum ¼" - Pallet changer - Dust extractor - Safety Guards |
| Amada Turret Coma 50-50-70 | <ul style="list-style-type: none"> - Capacity: 55 tons - Sheet size: 50" x 70" (Repositions to 120") - Thickest material: ¼" mild steel - Max. hole diameter: In ¼" MS 2 ¾" - Max. hole diameter: 4 ½" - Number of stations: 44 (with 2 auto index stations) - Ram stroke length: 1 ¼" |
| Amada Turret Pega 30-30-40 | <ul style="list-style-type: none"> - Maximum material thickness ¼" (6 mm) - Tonnage: 30 tons - Hole sizes: 3 ½" (89 mm) - Max. sheet size: 40" x 40" (1016 mm x 1016 mm) or 40" x 80" (1016 mm x 2032 mm) with 1 reposition - Speeds: 220 hit per minute @ 1" (25.4 mm) centers - No. of turret positions: 56 |
| Togu Tool Grinder, Togu III | |
| Amada Brake Press 35 | <ul style="list-style-type: none"> - Control (manual or cnc):CNC - Tonnage: 38.5 t / 34.9 t - Hyd/mech:HYD - Oa: length: 49.300" / 1,252.2 mm - Bh: 40.200" / 1,021.1 mm - Stroke: 3.940" / 100.1 mm |
| Amada Brake Press FaB80 | <ul style="list-style-type: none"> - Capacity 80 tons - Table length 98.4" - Max bend length 88.6" - Distance between uprights 86.5" - Throat depth 15.75" - Length of stroke 3.94" - Open height 14.58" |
| Amada Spot and Stud Welder ID40ST | <ul style="list-style-type: none"> - Rated capacity (at 50% duty cycle) 80 kVA - Power source: 3 Phases, 460 V, 60 Hz - Max. power input: 135 kVA - Max. rated welding current: 30,000 A - Standard throat dimensions (gap x depth): 200 x 600 mm (7.87" x 23.62") |
| PS4 Pemsrter | <ul style="list-style-type: none"> - Ram force 1,000 to 12,000 lbs. - Type: Pneumatic/lever - Throat depth: 18" - Height (Cabinet): 66" - Width (Press): 17" |
| Amada Horizontal Band Saw HA250W | <ul style="list-style-type: none"> - Rect-Cap (H): 10.0" - Rect-Cap (W): 12.0" - Rounds-Cap: 10.0" - Square-Cap: 10.0" - Power: 5.0 hp |
| Wulftec WP-200 | - Auto Shrink Wrapper |
| Lynx Stud Welding System | |

FabPro LLC was purchased in 2010 by HyPro Incorporated and moved to its present location in Whitewater. Our Mission and Quality commitment are the same as that of our parent company, HyPro. Please call us for your metal fabrication needs.




Company Overview
June 11, 2014

• **Our Mission Statement -**

HyPro is committed to providing value to our customers in the worldwide industrial commercial marketplace. We will provide **HIGH QUALITY, PRECISION MACHINED COMPONENTS and ASSEMBLIES** using **TECHNOLOGICALLY ADVANCED PROCESSES**. We will meet or exceed our **CUSTOMER'S EXPECTATIONS** through **CONTINUOUS IMPROVEMENT**.

• **Over 45 years of manufacturing experience.**

- State of the art CNC equipment.
- Full EDI & bar coding capabilities.
- Strong supply chain relationships.
- On-going commitment to quality.





ANNIVERSARY
1969 - 2009
HYPRO INCORPORATED

FabPro LLC, 840 E. Executive Drive, Whitewater, WI 53190 U.S.A. Phone: (262) 684-5220 Fax: (262) 684-5354
For Rapid quote returns please send RFQ's to sales@fabpro.net